



BS ENTERPRISES

One stop solutions for Hydraulics and
Industrial Items

Index

Hydraulic Products

- Atos
- Directional Control Valves
- Hydraulic Pumps
- Polyhydron
- Tucson Hydrocontrols
- Walvoil Valves
- Hydraulic Power Packs
- Hydraulic Cylinders
- Hydraulic and Pneumatic Seals
- Accessories
- Hydraulic Fittings
- Low Pressure Filters

Industrial Products

Hydraulic Hoses
Duct Hose
Fuel Hose
Food Grade Hoses
Teflon Tape
Industrial Hoses
Wiper

Atos

Atos is a leading manufacturer of components & systems in electro hydraulics: the advanced technology that integrates hydraulics with electronics to improve the performances of modern machinery along with FLAME Proof, high Safety valves and also SS valves for Defence and Marine applications.

vane pumps

PFE vane pumps, fixed displacement Cartridge design with integral hydraulic balancing, high performance, low noise level, high versatility and long service life. Three basic models in standard execution or high pressure line plus further reduction of noise level. Mounting according to ISO and SAE standard, full interchangeability of cartridges for maintenance and displacement fittings. Displacement up to 150 cm³/rev, pressure up to 210 and 300 bar. Following data refer to use with mineral oil, for other fluids information on request.



Atos



Servo-Proportionals

Digital servo-proportionals are performing close to good servo valves with excellent reliability ...at the top of proportional applications Spool-sleeve precise overlapping, closed-loop feedback, fail-safe, high response, digital electronics factory preset, flow/pressure/position digital control, software setting of functional parameters, rugged option versus vibrations & shocks, ex-proof & stainless steel executions



Basic principle of operation Proportional valves modulate hydraulic or motion parameters according to electronic reference signals. Basic principle of a proportional valve: the force of solenoid is related to the reference signal, thus properly moving the spool against a return spring to modulate hydraulic parameters

DLH size 06 DLK size 10 ISO 4401 subplate
max pressure 350 bar - response time 10/15 ms - hysteresis $\leq 0,1\%$

	size	spool (1)	max l/min
 DLHZO	06	L D	18, 32, 50, 70
 DLKZOR	10	T V	90, 160

(1) spools: L = linear D = differential 1:2 T = non linear V = progressive

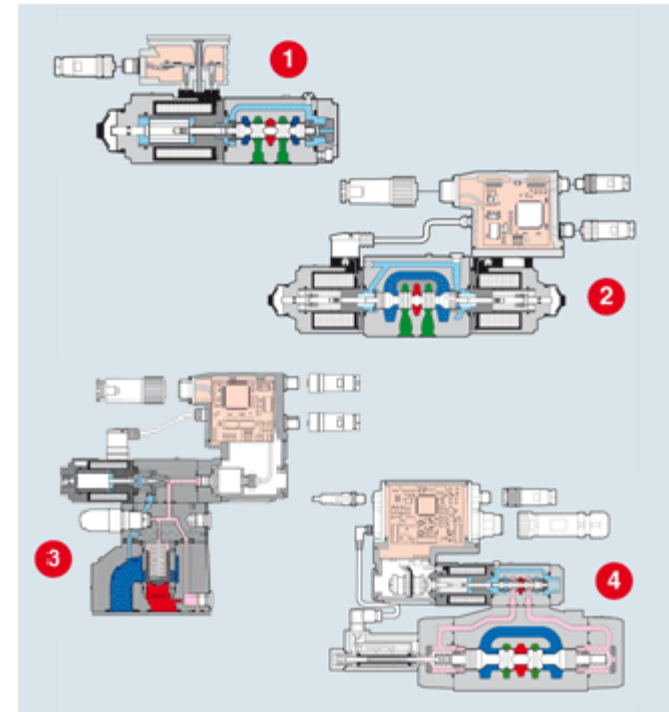
Atos

Digital Proportionals Valves

Atos proportionals are a full, modular, flexible line of valves to control flow, pressure, direction in association with proper electronic drivers and axis controllers. Full set of interchangeable spools with progressive, linear, differential characteristics and various sizes.

Excellent performances for response time, hysteresis, repeatability.

1. flow control, size 06, open-loop + new plug-in digital driver with infrared setting interface
2. directional valve, size 10, open-loop, with integral high performance electronics
3. pressure control, size 25, closed-loop by integral pressure transducer & digital driver
4. Servo-Proportional valve, size 16, 2-stage and double closed-loop driver, for high dynamics



Continue on next slide

Directional Control Valves



Different Types of Directional Control valves

- Hand lever Operated
- Solenoid Operated
- Hydraulic Operated

SPICA
Hydraulics Pvt. Ltd.

YUKEN

Hydraulic Pumps



Hand Pumps



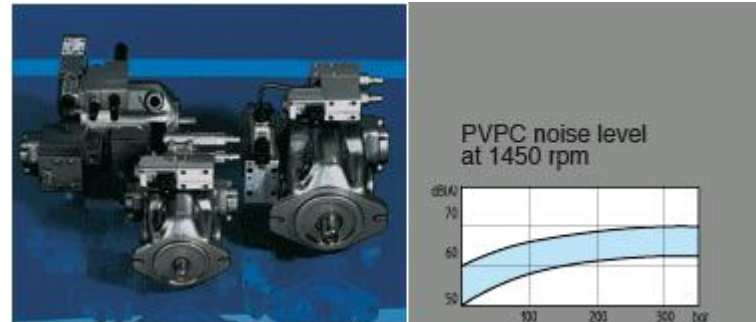
Single and Tandem Pumps



Radial Piston Pump



Vane Pumps



Axial piston pumps



Polyhydron



Counter Balance Valve



Pilot Operating Reducing Valve



Direct Operated Pressure Reducing Valve



Flow Divider Valve



Throttle Check Modular Valve



Pilot Operated Check Valve



Check Valve



Prefill Valve



Pressure control Modules



Direct Operated Pressure Relief Valves

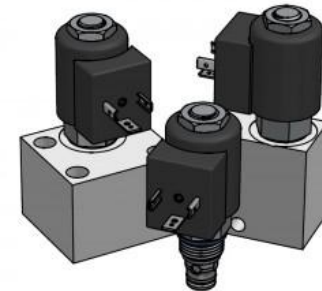
Tucson Hydrocontrols



Counter balance Valve



Pilot Operated Pressure Relief Valve



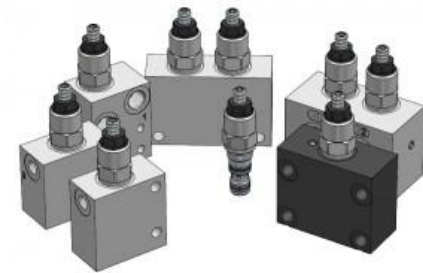
Solenoid Poppet Valve

Pressure Sequence Valve with Check



Overcentre Valve (Sun-fit)

Overcentric valves



WALVOIL VALVES



Monoblock Valves



Sectional Valves



Pilot Control Valves

Hydraulic Power Packs

Hydraulic Power Packs

- Mini Power Packs
- High End Power Packs

Application
SPM , Automobiles, Press,
Honing Etc.



Hydraulic Cylinders (MHH)

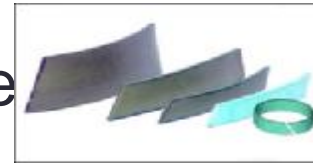
We offer Hydraulic Cylinder, Compact Cylinder, Welded Type Cylinder, Clamping Cylinder, Ram Type Cylinder and Threaded Body Cylinder. Clamp Cylinder from India.

Cylinder Type : Single Acting, Double Acting and Telescopic Type finish in standard and customized finish support.



Hydraulic and Pneumatic Seals

- Bonded Seals / Dowty Seals
- Rod / Piston Composite Seals
- Pneumatic Cylinder Seals
- Glyd Rings / Guide Strips / Guide Bushes
- O Rings
- X Rings / Quad-Rings
- Chevron Packing
- Turkiite Strips
- Oil Seal



Accessories



Flow Control Valve



Hose Bursting Valve



Needle Valve



Ball Valve



Pressure Switches



Bell Housing



Lovejoy Coupling



Gear Coupling

Accessories



Throttle Check Valve



Manifold Blocks



Modular valves

Flutec

Hydraulic Fittings & QRC

Single Ferrule Hydraulic Fittings



Low and Heavy Pipe Clamps



Double Ferrule Swagelok Type Fittings



Quick Releasing Couplings



Hydroline/Marotte Filters



Spin On Filters



In-Line Filters



Tank Top Filters



Strainer



Spin On Filters



Level Indicator



INDUSTRIAL PRODUCTS

Gates

- Extremely High Pressure



Recommended For: Extremely high-pressure, high-impulse applications such as hydrostatic transmissions. R15

Tube: Black, oil resistant, synthetic rubber (Nitrile – Type C).

Reinforcement: Four (six for -20) alternating layers of spiraled, high tensile steel.

Cover: Black, oil resistant, synthetic rubber (Neoprene – Type A). Blue stripe with gold print layline.

Temperature Range: -40°C to +121°C #



Recommended For: Extremely high-pressure hydraulic applications. EFG5K is designed to meet all requirements of SAE 100R13 specifications and performance requirements of EN 856 4SH (-24, and -32) and EN 856 R13.

Compatible with biodegradable hydraulic fluids like polyolester, polyglycol and vegetable oil as well as standard petroleum based fluids. Superior impulse performance: tested to 1,000,000 impulse cycles

Tube: Black, oil resistant synthetic rubber (Neoprene – Type A).

Reinforcement: Four (six for -20) alternating layers of spiraled, high-tensile steel.

Cover: Black, oil resistant synthetic rubber (Neoprene – Type A). Dual red stripe layline.

Temperature Range: -40°C to +121°C #

Continue on next slide

Gates



Recommended For: Extremely high-pressure, high-impulse applications. Exceeds all performance requirements for SAE 100R12, EN 856 R12 and EN 856 4SP (-16). Compatible with biodegradable hydraulic fluids like polyolester, polyglycol and vegetable oil as well as standard petroleum-based fluids. Superior impulse performance: tested to 1,000,000 impulse cycles

Tube: Black, oil resistant synthetic rubber (Nitrile – Type C).

Reinforcement: Four alternating layers of spiraled, high tensile steel wire.

Cover: Black, oil resistant, synthetic rubber (Neoprene – Type A). Blue stripe with white print layline.



Recommended For: Extremely high-pressure, high-impulse hydraulic applications. Most flexible EN 856 4 SP hose in industry. Superior impulse performance: tested to 1,000,000 impulse cycles at bend radius lower than EN 856 standard. Compatible with biodegradable hydraulic fluids like synthetic ester, polyglycol and vegetable oil as well as standard petroleum-based fluids.

Tube: Black, oil resistant synthetic rubber (Nitrile)

Reinforcement: Four alternating layers of spiraled, high tensile steel wire.

Cover: Black, oil resistant, synthetic rubber (Nitrile)

Temperature Range: -40°C to +100°C

Gates

- **High Pressure**



Recommended For: High-pressure hydraulic oil lines. Meets or exceeds the requirements of SAE 100R2AT and SAE 100R2 Type Sand performance requirements of EN 853 2SN.

Tube: Black, oil-resistant synthetic rubber (Nitrile – Type C).

Reinforcement: Two braids of high-tensile steel wire.

Cover: Black, oil and abrasion resistant thin synthetic rubber (Modified Nitrile – Type C2).

Temperature Range: -40°C to +100°C



Recommended For: Hydraulic jack applications. Meets Material Handling Institute specification IJ 100 for hydraulic hose and assemblies used with jacking systems.

Tube: Black, oil resistant, synthetic rubber (Nitrile – Type C).

Reinforcement: Two braids of high tensile steel wire.

Cover: Black, oil and abrasion resistant synthetic rubber (Modified Nitrile – Type C2).

Temperature Range: -40°C to +100°C

Gates

- **Medium Pressure**



Recommended For: Medium pressure hydraulic lines. Meets or exceeds the requirements of SAE 100R1 Type AT and performance requirements of DIN 20022 1SN / EN 853 1SN.

Provides tighter than standard minimum bend radius and greater flexibility for easier plumbing.

Tube: Black, oil-resistant synthetic rubber (Nitrile – Type C).

Reinforcement: One braid of high-tensile steel wire.

Cover: Black, oil and abrasion-resistant synthetic rubber (Modified Nitrile – Type C2).

Temperature Range: -40°C to +100°C

Recommended For: Medium pressure hydraulic oil lines. Meets or exceeds requirements of SAE 100R1 Type AT.

Tube: Black, oil resistant, synthetic rubber (Nitrile – Type C).

Reinforcement: One braid of high tensile steel wire.

Cover: Black, oil and abrasion resistant synthetic rubber (Hypalon† – Type M).

Temperature Range: -40°C to +135°C

Gates

- **Low Pressure**



Recommended For: Hydraulic oil lines, heavy-duty transmission oil cooler lines and glycol anti-freeze solutions. Meets or exceeds requirements of SAE 100R6 /EN 854. Specially resistant to diesel permeation.

Tube: Black, specially compounded, synthetic rubber (Nitrile – Type C).

Reinforcement: One fiber braid.

Cover: Black, oil and abrasion resistant, synthetic rubber (Neoprene – Type A).

Temperature Range: -40°C to +135°C



Recommended For: Hydraulic oil lines, anti-freeze solution or water. Meets or exceeds requirement of SAE 100R3/EN854

Tube: Black, synthetic rubber (Nitrile).

Reinforcement: Two braids of high tenacity synthetic textile yarn

Cover: Modified Nitrile.

Temperature Range: -40°C to +100°C

Gates

- Industrial Hoses



AIR - WATER (GREENLINE) HOSE



PNEUMATIC TOOL HOSE



SUPER SPRAY (GREENLINE) HOSE



Rock Drill Hose

Gates



Steam Hose



Chemical Hose

Industrial Hoses



Black Snake/Petrol Hose



Sandblast Hose

Gates



Carbon Free Hose

Industrial Hoses



Sipper Aviation Hose

Other Hoses

- Duct Hose
- Food Grade Hose
- Garden Hose
- Telfon Hose
- Sprayer Hose
- PVC Hose
- Special Hose (Petrol Hose)

THANK YOU

CONTACT US

BS ENTERPRISES

Phone : 9595058322/7276008322

Email : bsenterprises8322@gmail.com

Web:

Indiamart:

Follow us at



Address:

PAP- J- 142, Telco Road, Behind
Quality Circle, MIDC Bhosari,
Pune -26